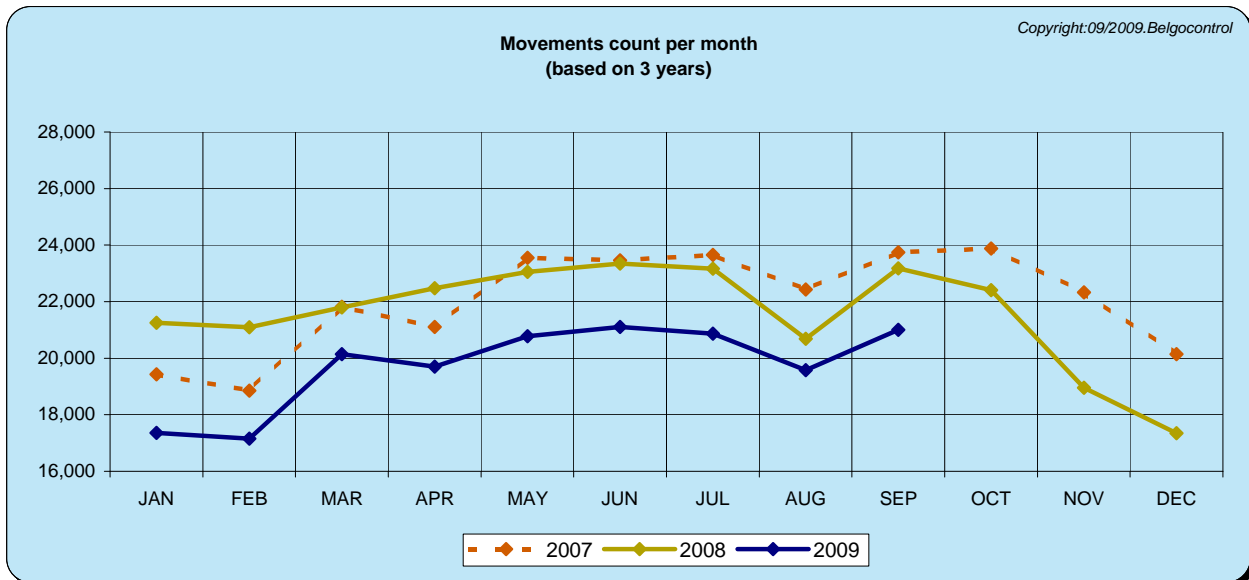




OVERVIEW MOVEMENTS AT BRUSSELS AIRPORT

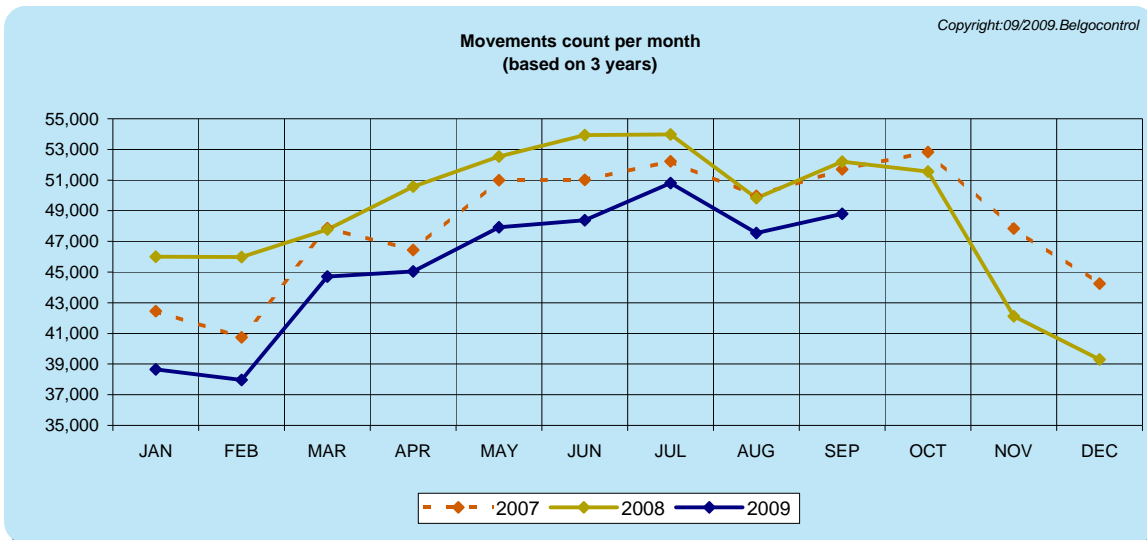
	2007	2008	2009	%
JAN	19,427	21,252	17,353	-18.35
FEB	18,849	21,094	17,153	-18.68
MAR	21,817	21,800	20,141	-7.61
APR	21,101	22,480	19,699	-12.37
MAY	23,546	23,056	20,780	-9.87
JUN	23,456	23,352	21,101	-9.64
JUL	23,649	23,171	20,871	-9.93
AUG	22,432	20,691	19,574	-5.40
SEP	23,745	23,182	21,002	-9.40
OCT	23,874	22,412		
NOV	22,327	18,958		
DEC	20,143	17,347		
TOT	264,366	258,795	177,674	





OVERVIEW MOVEMENTS AT CANAC-ALL TRAFFIC

	2007	2008	2009	%
JAN	42,447	46,012	38,651	-16.00
FEB	40,737	45,988	37,966	-17.44
MAR	47,857	47,785	44,703	-6.45
APR	46,440	50,578	45,041	-10.95
MAY	50,989	52,533	47,924	-8.77
JUN	51,012	53,943	48,383	-10.31
JUL	52,219	53,977	50,809	-5.87
AUG	49,979	49,829	47,539	-4.60
SEP	51,699	52,194	48,794	-6.51
OCT	52,820	51,548		
NOV	47,842	42,126		
DEC	44,238	39,295		
TOT	578,279	585,808	409,810	

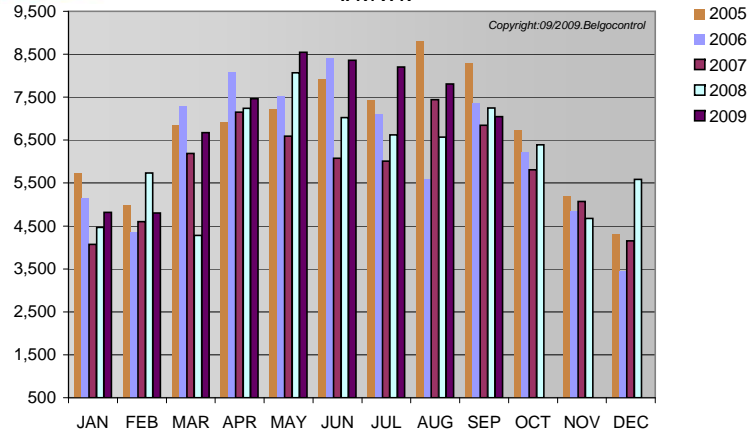


Attachment Ref. PR/09-15
20/10/2009

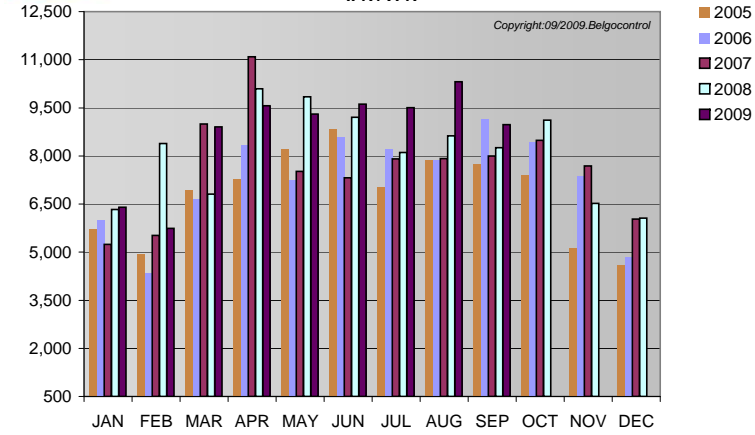
REGIONAL AIRPORTS-TOTAL MOVEMENTS: COUNT PER MONTH



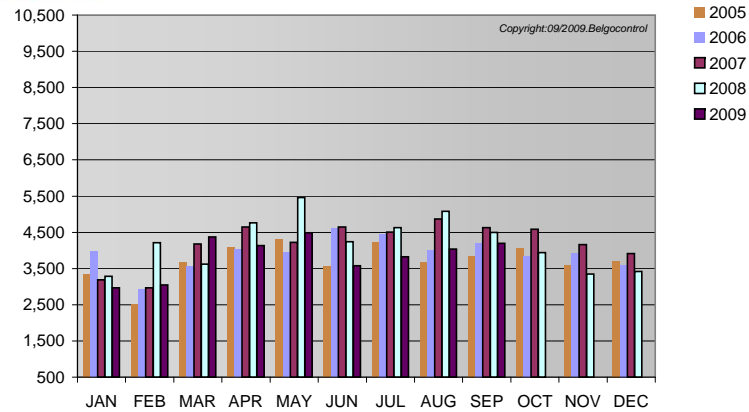
ANTWERPEN/Deurne
Total-movements: count per month
IFR+VFR



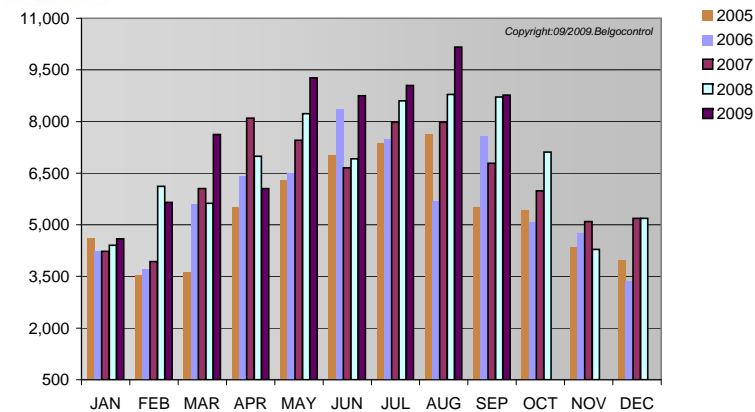
CHARLEROI/Brussels South
Total-movements: count per month
IFR+VFR



LIEGE/Liège(CIV)
Total-movements: count per month
IFR+VFR



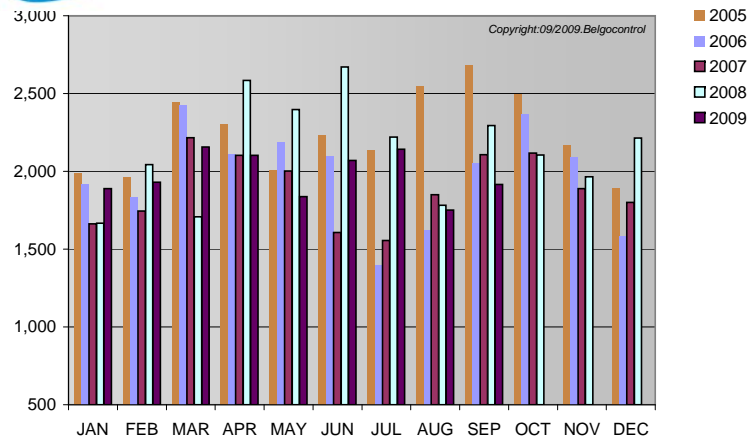
OOSTENDE-BRUGGE/Oostende
Total-movements: count per month
IFR+VFR



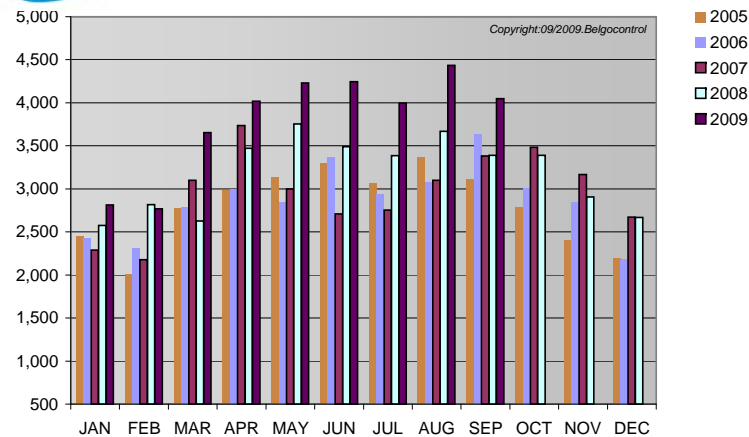
REGIONAL AIRPORTS-IFR-MOVEMENTS: COUNT PER MONTH



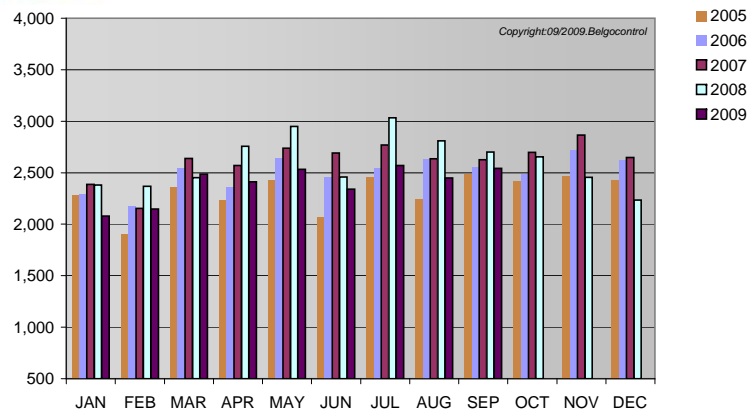
ANTWERPEN/Deurne
IFR-movements: count per month



CHARLEROI/Brussels South
IFR-movements: count per month



LIEGE/Liège(CIV)
IFR-movements: count per month



OOSTENDE-BRUGGE/Oostende
IFR-movements: count per month

